

HOW DID I GET THAT LEAK?

The most common leaks in the household result from worn out parts in faucets, showerheads and toilets. Most repairs can be done by do-it-yourselfers with minimal difficulty. You can also have the work done by a professional.

This guide will help you determine which part of your water system may have leaks. You should repair leaks as soon as possible. Even a small drip can waste 20 gallons a day or more!

HOW DO I CHECK FOR LEAKS?



1. Make sure no water is being used inside or outside the house.
2. Locate your water meter. The meter is usually located in an underground box on a property corner or line. Your meter can usually be identified by matching the meter number on your bill with the number stamped on the meter lid or the meter body.
3. Record the meter reading and wait 1-2 hours. **Do not use any water during this time.** (Some meters have a small star, triangle or red indicator needle, often referred to as a leak detector. This should



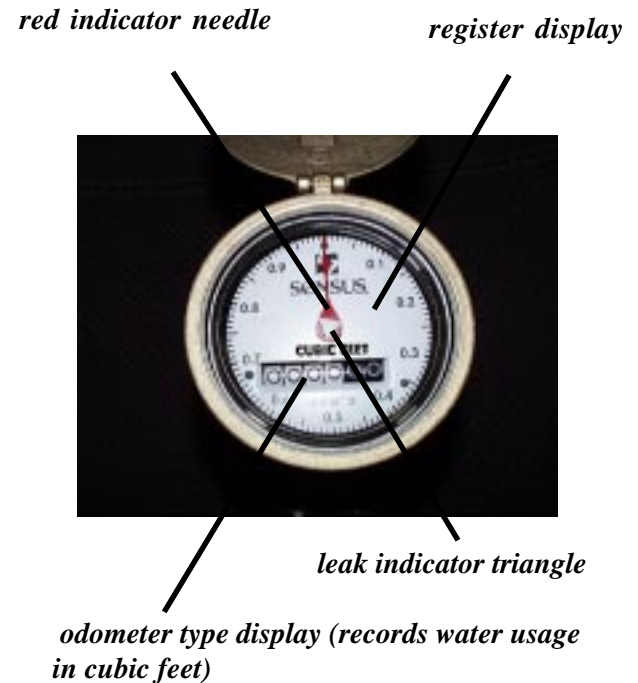
Typical meter installation for two households. Match the meter number on the lid or meter body to the meter number on your water bill.

not be moving when water is not being used.

4. Read the meter again. If the reading has changed, you may have a leak.
5. Next, you will want to identify whether or not the potential problem is in the service line (from meter to house), in the house, or possibly in the irrigation system. Shut off your house master valve and verify that the valve is working properly by opening another fixture in the house. The master valve is where the water enters the house, and is often located in your garage. If you have an irrigation system, shut off the main valve and verify that it is working properly.
6. At this time repeat steps #1 through #4.
7. If the reading has changed, it may indicate the possible leak is between the meter and master valve. If the reading has remained the same, it may indicate the possible leak is in the house, past the master valve.

8. If the meter reading or dial position has not changed after completing steps 5 through 7, the possible leak may be associated with your irrigation system. Have someone watch your meter while you turn the irrigation system on at the irrigation master valve. If the dial starts spinning, this may indicate the leak is in that system.

A break in an irrigation zone line may not cause the meter to spin at this time. Further investigation may be required to determine if a broken zone line is the cause of a high bill.



This brochure contains the following information:

How to check for leaks:

- Inside your house
- In your irrigation line
- In your service line

The following are conditions that must be met in order to receive a water bill adjustment:

- The leak must be repaired within one month of discovery
- Proof of repair, such as invoices, must be provided to the District

For further information, please refer to our "Leak Adjustment Billing Policy" brochure.

QUESTIONS? Call our Customer Service Department at (425) 392-6256 or email us at

Billing@sammplat.wa.org

**Unrepaired Leaks Can Be Costly
Water Loss in Gallons**

| Leak this Size | Loss per Day | Loss per Month | Loss per Year |
|----------------|--------------|----------------|---------------|
| ● | 170 | 3,600 | 43,200 |
| ● | 360 | 10,800 | 129,600 |
| ● | 693 | 20,790 | 249,480 |
| ● | 1,200 | 36,000 | 432,000 |
| ● | 1,920 | 57,600 | 691,200 |

| Leak this Size | Loss per Day | Loss per Month | Loss per Year |
|----------------|--------------|----------------|---------------|
| ● | 3,096 | 92,880 | 1,114,560 |
| ● | 4,296 | 128,880 | 1,546,560 |
| ● | 6,640 | 199,200 | 2,390,400 |
| ● | 6,984 | 209,520 | 2,514,240 |

Even small leaks can waste water and cost money! If the leak is a hot water drip, you're also paying for wasted energy. Some leaks may not be obvious, such as a silent toilet leak or a leak in your irrigation system. It is very important to identify and repair these potential problems promptly!

SAMMAMISH PLATEAU WATER AND SEWER DISTRICT

1510 - 228th Ave SE
Sammamish WA 98075
Phone: (425) 392-6256
Fax: (425) 391-5389

Website: www.sammplat.wa.org

You May Have a LEAK!



A step-by-step guide to help you identify the problem

IMPORTANT INFORMATION ENCLOSED

Please contact us to verify receipt of this notice



SAMMAMISH PLATEAU

WATER AND SEWER DISTRICT
1510 - 228th Ave. S.E. • Sammamish, Washington 98075
(425) 392-6256 • Fax (425) 391-5389 • www.sammplat.wa.org